



PETE'S Party & Tent RENTAL

315 Lorne Street, Sudbury, ON P3C 4R1

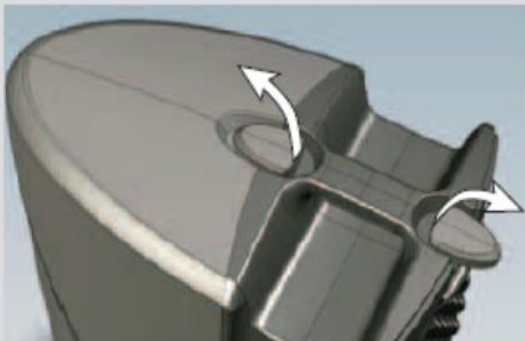
Phone: 705-673-7383 www.petesrentall.ca

FENDER PASSPORT 500



System Set-Up

1. Flip open the cabinet latches on top of the Passport and detach the speaker cabinets from the powered mixer section.



2. For optimal results, elevate the speaker cabinets on Passport Speaker Stands or on sturdy tables and place the speakers far apart to maximize stereo separation. Position the mixer close to where you will be performing so you will have easy access to the control panel.

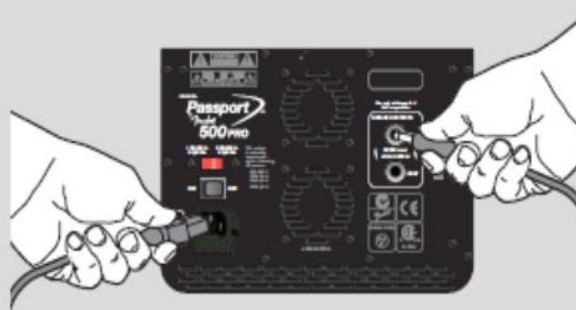


3. Open the storage compartment on the rear of the mixer and remove the power cord and speaker cables.

NOTE: The back wall of the storage compartment features a docking connector for a Passport UHF Wireless Microphone System.



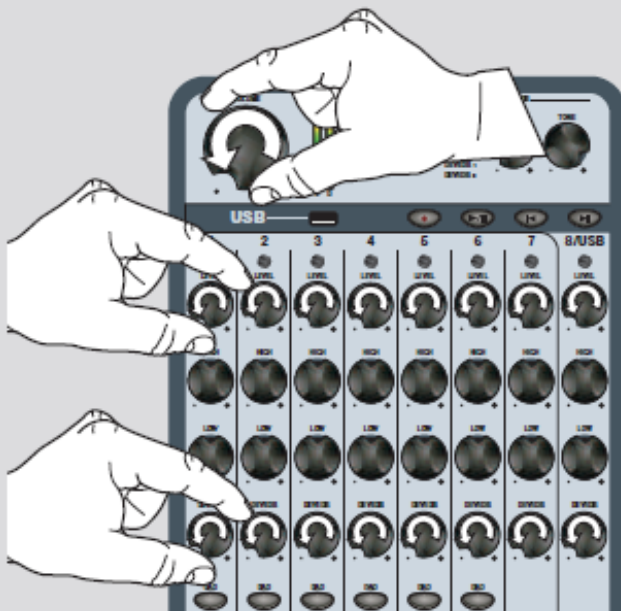
4. Plug the speaker cables into the left and right speaker jacks on the back of the mixer, then connect the corresponding left and right speakers. Make sure the power switch is off, then plug the supplied power cord into the power socket on the back of the mixer and the other end into a grounded AC power outlet.



- Connect each of your microphones, instruments and other sound sources into separate channels using the appropriate type of input jack. Use the mono channels on the left for monophonic sources such as microphones and use the stereo channels on the right for stereo/mono sources such as CD players, mp3 players, keyboards and other line level audio devices.



- Rotate the master Volume knob, all channel Level knobs and all Reverb knobs fully counter-clockwise to start.



- Turn on all equipment connected to the Passport first, then switch the Passport on. The Power LED on the Passport should illuminate green (Protect LED will illuminate briefly).



- Turn the master Volume knob up to 1/4 volume.



- Pick up a microphone (or other source) and use it at the intended level while slowly turning up the corresponding channel Level knob. Watch the signal LED above the Level knob occasionally. It illuminates green with an input signal level present, yellow when the input signal gets closer to clipping, and red during clipping (distorting). If you see red, reduce the input signal level at the source or engage the PAD switch to avoid signal distortion and overloading the amplifier's input stage.



- Set up each of the other channels in the same way. Use the channel Level knobs to adjust the relative loudness of each channel until you get the right overall balance, then use the master Volume knob to adjust everything together. The master Volume knob on your Passport has signal level meters. If you see the meters illuminate into the red zone, turn down the master Volume knob.



- Start with each of the tone knobs (Tone, High, Low) in the center detent position. At this setting they have no equalization effect. From there you can experiment by turning each tone control to see what sounds best to you. If possible, have someone walk to each corner of the room and make sure the settings and speaker positions provide clear and consistent coverage throughout your audience.



Basic set-up is now complete! The following pages contain detailed information on each of the Passport 500 Pro's many features.

Passport® 500 Pro

Master Controls



- A VOLUME**—Use to adjust the overall loudness of your Passport Pro. When this knob is rotated fully counter-clockwise, there will be no sound coming out of the Passport speakers.
- B LEVEL METERS**—Indicates left/right power amp signal levels. If the level meters illuminate into the *red* zone, reduce the Master Volume (A) level to prevent sound distortion and to avoid amplifier overload and shutdown (see Power/Protect LED (U) to reset the unit after a protect mode shutdown).
- C TONE**—Use to adjust the overall tone character of your Passport Pro. Select the center detent position for no equalization. Rotate clockwise to boost high frequencies and reduce lows, or conversely, rotate counter-clockwise to reduce highs and boost lows.
- D REVERB SELECT**—Press to select a Reverb type. Both Reverbs are excellent for various source materials such as vocals, acoustic guitar, drums, etc.
- Reverb 1** — Dark hall reverb to bright plate reverb (depending on tone setting). Short to long diffusion (depending on time setting).
- Reverb 2** — Medium dark to bright hall reverb (depending on tone setting). Short to very long diffusion (depending on time setting).
- E REVERB TIME**—Adjusts the length of the Reverb tail.
- F REVERB TONE**—Adjusts the tone character of the Reverb effect.

Channel Controls

- G SIGNAL PRESENT / CLIP INDICATOR**—This LED illuminates green to indicate an input signal level is present in the channel. It turns orange when the input signal level gets closer to clipping and red during clipping (distorting). If you see *red*, reduce the input signal level at the source, or press the PAD (K) button.
- H LEVEL**—Use to adjust each channel's volume relative to the loudness of the other channels.
- I HIGH / LOW**—Use to adjust the tone character of each channel. In the center detent position the tone control is "flat" and has no effect on the channel's sound.
- J REVERB**—Adjusts the level of the Reverb effect in each channel.
- K PAD**—Press in to reduce the input sensitivity of the channel by 20dB if the source level is too high (see (G) above).



Mono Channel Inputs

- L MIC**—Plug your microphone into this jack.
- M LINE**—Plug an instrument or other line level mono source into this jack. This input accepts balanced and unbalanced sources.
- N PHANTOM POWER**—Press in to supply voltage to microphones that require phantom power. **WARNING: Do not apply phantom power to ribbon mics!**



Stereo Channel Inputs

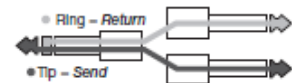
- O 1/8" STEREO**—Plug your CD player, MP3 player, computer audio interface, or other line-level, stereo source into this jack.
- P 1/4" LEFT (MONO) / RIGHT**—Plug a line-level stereo source that requires separate 1/4" connections for each channel, into these jacks. You can also use a stereo channel as a mono channel by using only the L/Mono jack (mono output will be through both speakers).



Front Panel Outputs



- Q STEREO OUT**—Connect recording equipment here. Master Volume does not effect this output, but each of the channel controls do.
- R LEVEL**—Adjusts the output level of the Stereo Out (Q) jack to accommodate the input level requirements of your recording equipment.
- S PRE OUT / POWER AMP IN**—Use these jacks to connect an equalizer or effects processor to the Passport. Special "insert Y-cables" are required to use these jacks.
- T SUB OUT**—Output connection for a powered subwoofer. This jack automatically activates a 120Hz high-pass filter on the main speaker outputs when a plug is inserted.



Power / Protect LEDs

- U POWER / PROTECT**—The Power LED will illuminate green when the Passport is turned on. If the Protect LED illuminates red, the Passport amplifier has shutdown to protect itself from electrical or thermal trouble. The Passport will reset itself as soon as the problem has been resolved. If the Passport will not reset and the Protect light stays red even after you've tried different power outlets and given it time to cool down, take it to an authorized Fender Service Center. If neither LED illuminates when powered on, check the Fuse (W) in the Power Socket.



USB Record / Playback

The Passport 500 Pro features an integrated USB playback/record system that allows you to playback .wav and .mp3 files as well as record .wav audio files using a flash drive.



Use Channel 8 to control USB playback level and tone and use the Channel 8 Signal Indicator to monitor recording levels.

- Ⓧ **USB**—Plug your flash drive in here.
- Ⓦ **RECORD**—Press to record a new track, then press again to stop recording. The button will illuminate during recording. Tracks are recorded in stereo as 16 bit/44.1KHz .wav files. **NOTE:** USB recording levels are determined by the Channel Level knobs. If your recording is too quiet, increase the levels on the channels that are too soft, but be careful, if you hear distortion you have increased the levels too much!

Tracks recorded to your flash drive will be saved with sequential filenames: "500Pro Track 1" then "500Pro Track 2," etc. Each recorded track will always be named sequentially after the last track recorded, even if tracks earlier in the sequence have been deleted. For example, if you delete "500Pro Track 1" but not "500Pro Track 2," the next track recorded will be named "500Pro Track 3."

- Ⓧ **PLAY / PAUSE**—Press to play the tracks on your flash drive. Press again to pause playback and the button will flash. Press and hold for 2 seconds to stop completely (button turns off). Pressing the next time will start playback from the first track on the flash drive.
- Tracks on your flash drive will play back in alphanumerical order, with the numbered track titles playing first.
- Ⓨ **PREVIOUS**—Press to jump to the beginning of the current track, or within the first 3 seconds of the current track to skip to the beginning of the previous track. Press and hold for 2 seconds for reverse scan.
- Ⓩ **NEXT**—Press to jump to the beginning of the next track. Press and hold for 2 seconds to forward scan.

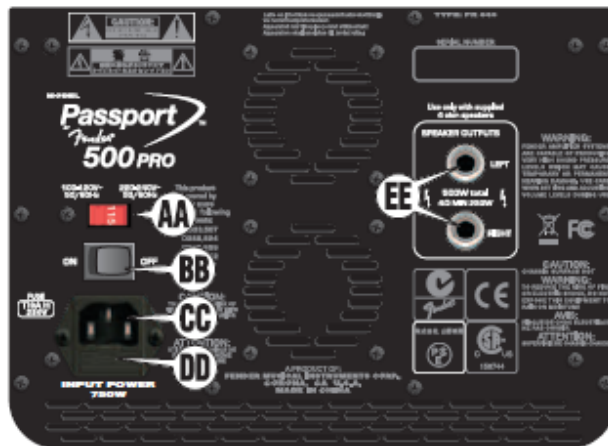
Erasing Tracks Recorded to Flash Drive:

To erase only the tracks you recorded to the flash drive but nothing else: Press and hold + until starts to blink, then press . All four buttons will flash sequentially. To abort the operation before erasing has started, press any button other than .

Formatting your Flash Drive:

To completely wipe all files from your flash drive: Press and hold + + until & flash slowly. Then press once and & will flash rapidly. Press again and formatting will begin. All four buttons will flash sequentially. To abort the operation before formatting has started, press either or .

Rear Panel



- Ⓐ **VOLTAGE SELECTOR**—Change this setting only if you travel to a country that requires a different voltage setting.
- Ⓑ **POWER**—Switches the Passport on-off.
- Ⓒ **POWER SOCKET**—Connect to a grounded AC outlet in accordance with the proper Voltage Selector setting.
- Ⓓ **FUSE**—To replace a failed fuse, unplug the power cord, then pry the fuse holder out of the Power Socket . Only use a fuse of the same type and rating.
- Ⓔ **SPEAKER OUTLETS**—Connect the Passport speakers here using the cables provided.

Specifications

| | | |
|---------------------------|--------------------------------------|-----------------------------------|
| TYPE: | PR 846 | |
| PART NUMBERS: | 069-4405-000 (120V~, 60Hz) | 069-4405-910 (110V~, 60Hz) TW DS |
| | 069-4405-930 (240V~, 50Hz) AUS DS | 069-4405-040 (230V~, 50Hz) UK |
| | 069-4405-950 (220V~, 50Hz) ARG DS | 069-4405-060 (230V~, 50Hz) EUR |
| | 069-4405-970 (100V~, 50/60Hz) JPN DS | 069-4405-990 (220V~, 60Hz) ROK DS |
| POWER REQUIREMENT: | 750W | |
| FUSE: | T10A H, 250V | |
| DIMENSIONS: | Height: 23 in (58.4 cm) | Width: 29 in (73.6 cm) |
| | Depth: 11 in (27.9 cm) | |
| WEIGHT: | 44 lb (20 kg) | |

Product specifications are subject to change without notice.



USB Specifications and Formats

| | |
|-----------------------------|-----------------------------------------------------|
| USB file format: | FAT16, FAT32 |
| MP3 bit rate: | 8k-320Kbps, sample rate: 8K-48KHz, VBR is supported |
| WAV (PCM) Playback: | 8/16bit, sample rate <=48KHz |
| WAV (PCM) Recording: | 16bit, 44.1K sample rate, stereo |

For more detailed USB information, log on to fender.com and visit the Support area.